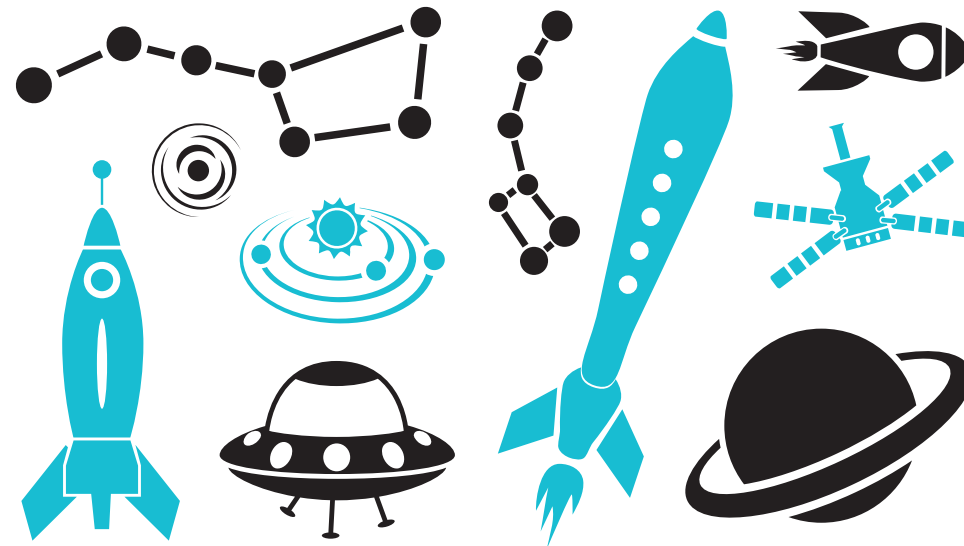


Thank You!

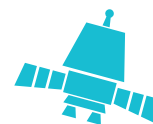
FOR FLYING

MATHS PASSPORT
memorable mathematics for children



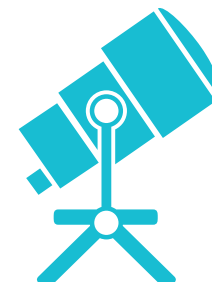
MATHS PASSPORT

memorable mathematics for children



SATURN

NAME: _____





WELCOME TO

SATURN!

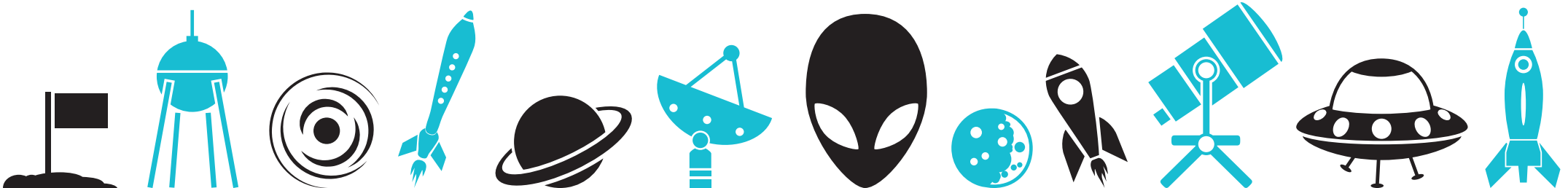
WHERE NEXT?



URANUS!

WHAT I NEED TO DO!

THESE ARE THE TARGETS I NEED TO ACHIEVE TO COMPLETE SATURN	DATE I FIRST MET THE TARGET	DATE I MET THE TARGET FOR A SECOND TIME	DATE I COMPLETED THE TARGET
I CAN RECOGNISE ANY MULTIPLE OF 9			
I CAN CONVERT METRIC UNITS OF CAPACITY INTO ANY OTHER METRIC OF CAPACITY			
I CAN RECALL ALL TRIANGULAR NUMBERS TO 55			
I CAN CONVERT A DECIMAL GREATER THAN 1 INTO A FRACTION			
I CAN ROUND ANY NUMBER WITH UP TO THREE DECIMAL PLACES TO THE NEAREST WHOLE NUMBER			
I CAN ESTIMATE THE PRODUCT OF TWO 2 DIGIT NUMBERS USING ROUNDING TO THE NEAREST 10			



FAR OUT SPACE DUDES!

YOU TRAVELLED THROUGH:

SATURN

NAME: _____

DAY / MONTH / YEAR _____

TEACHER _____

MATHS PASSPORT
memorable mathematics for children

OFFICIAL CERTIFICATE

DID YOU KNOW?



BECAUSE MERCURY GOES ROUND THE SUN SO QUICKLY, THE PLANET WAS NAMED AFTER THE MESSENGER OF THE ROMAN GODS!

IT TAKES MERCURY 88 EARTH DAYS TO GO AROUND THE SUN AND MOVES AT A SPEED OF 107,372 MILES AN HOUR!



MERCURY IS THE PLANET CLOSEST TO THE SUN. IT IS ABOUT 36 MILLION MILES AWAY!

A DAY ON MERCURY LASTS FOR 59 EARTH DAYS AS THIS IS HOW LONG IT TAKES TO TURN FROM DAY INTO NIGHT!



MERCURY IS ONE OF FIVE PLANETS THAT CAN BE SEEN FROM EARTH WITHOUT USING A TELESCOPE!