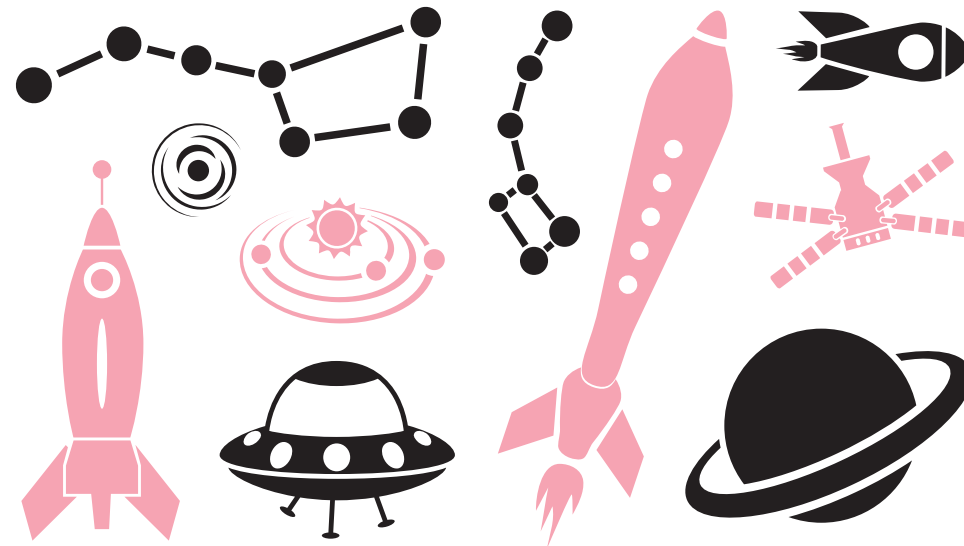


Thank You!

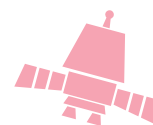
FOR FLYING

MATHS PASSPORT
memorable mathematics for children



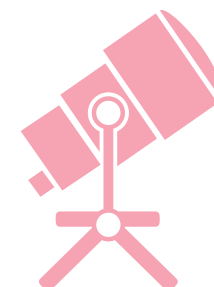
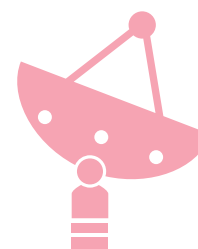
MATHS PASSPORT

memorable mathematics for children



PLUTO

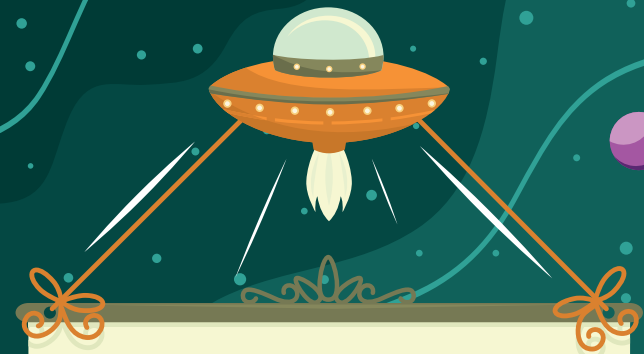
NAME: _____





WELCOME TO

PLUTO!



OFFICIALLY AWESOME!



CONGRATULATIONS

WHIZ KID!

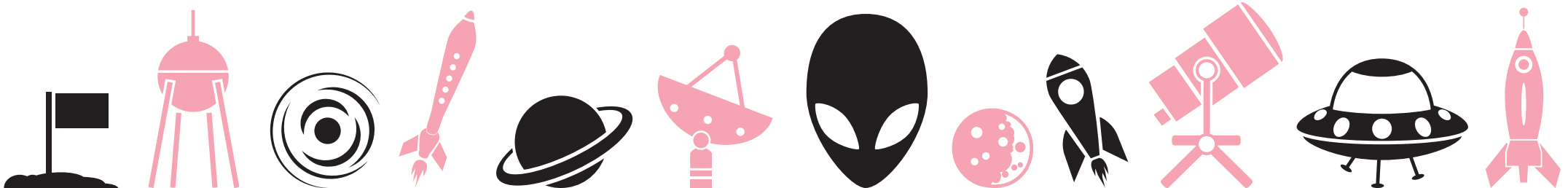
YOU'VE TRAVELLED THE

MATHS PASSPORT

UNIVERSE!

WHAT I NEED TO DO!

THESE ARE THE TARGETS I NEED TO ACHIEVE TO COMPLETE PLUTO	DATE I FIRST MET THE TARGET	DATE I MET THE TARGET FOR A SECOND TIME	DATE I COMPLETED THE TARGET
I CAN RECOGNISE ANY MULTIPLE OF 2 - 12			
I CAN USE THE FIBONACCI SEQUENCE TO APPROXIMATELY CONVERT BETWEEN MILES AND KILOMETERS AND VICE VERSA			
I CAN RECOGNISE AND REPRESENT NUMBERS UP TO 255 WRITTEN IN BINARY NOTATION			
I CAN FIND ALL 17 2-DIGIT HAPPY NUMBERS!			
I CAN ROUND NUMBERS AND MEASURES TO THREE SIGNIFICANT FIGURES (SF)			
I CAN SUBTRACT INTEGERS			



TO INFINITY - AND BEYOND!

YOU TRAVELLED THROUGH:

PLUTO

NAME: _____

DAY / MONTH / YEAR _____

TEACHER _____

MATHS PASSPORT
memorable mathematics for children

OFFICIAL CERTIFICATE

AND COMPLETED YOUR JOURNEY!

DID YOU KNOW?



PLUTO WAS NAMED AFTER THE ROMAN GOD OF THE UNDERWORLD!

SOME SCIENTISTS BELIEVE THAT PLUTO WAS ONCE A MOON OF NEPTUNE!



IT TAKES 248 EARTH YEARS FOR PLUTO TO ORBIT THE SUN AND ABOUT 6 HOURS TO SPIN ONCE!

LIGHT FROM THE SUN TAKES FIVE HOURS TO REACH PLUTO! IT ONLY TAKES EIGHT MINUTES TO REACH EARTH!



PLUTO WAS DISCOVERED IN 1930 AND DECLARED THE NINTH PLANET IN OUR SOLAR SYSTEM. HOWEVER, MANY SCIENTISTS DID NOT AGREE THAT IT WAS A PLANET AND IN 2006 PLUTO WAS CLASSIFIED AS A 'DWARF PLANET'. THERE ARE FIVE DWARF PLANETS IN OUR SOLAR SYSTEM!