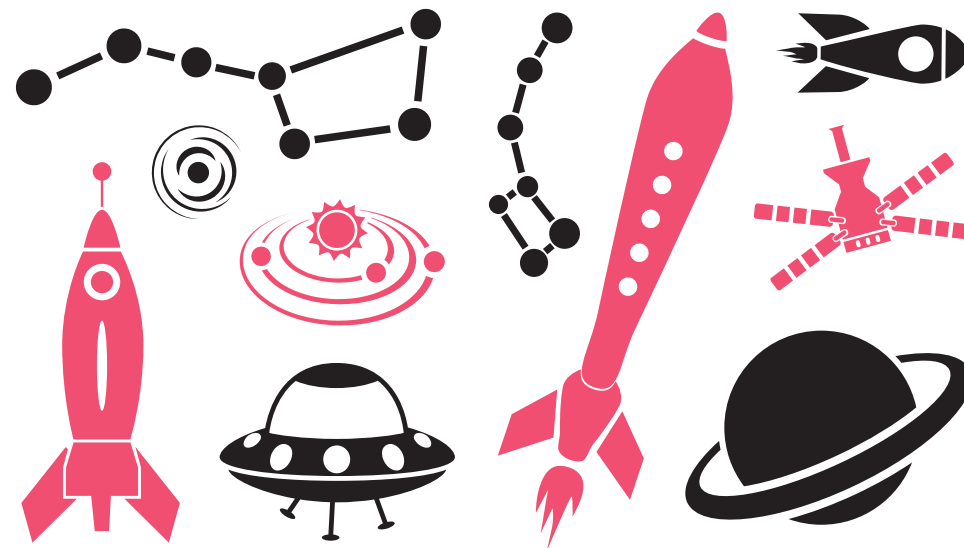


Thank You!

FOR FLYING

MATHS PASSPORT
memorable mathematics for children



MATHS PASSPORT

memorable mathematics for children

MERCURY

NAME: _____

A collection of Mercury-themed icons. At the top left is a black satellite. Below it is a black telescope on a tripod. To the right are a crescent moon with three stars, a red satellite dish on a tripod, a black alien head, and a red telescope on a tripod. At the top right is a black flag on a pole.



WELCOME TO

MERCURY!



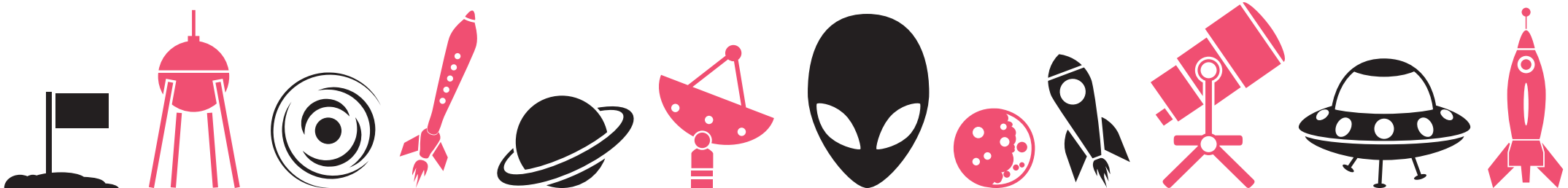
WHERE NEXT?



VENUS!

WHAT I NEED TO DO!

THESE ARE THE TARGETS I NEED TO ACHIEVE TO COMPLETE MERCURY	DATE I FIRST MET THE TARGET	DATE I MET THE TARGET FOR A SECOND TIME	DATE I COMPLETED THE TARGET
I CAN RECOGNISE ANY MULTIPLE OF 3			
I CAN FIND THE PRIME FACTORS OF ANY NUMBER UP TO 100			
I CAN CLASSIFY ANY NUMBER UP TO 100 AS PRIME OR COMPOSITE			
I CAN COUNT UP AND DOWN IN HUNDRETHS			
I CAN ROUND ANY NUMBER UP TO 1,000,000 TO THE NEAREST 100			
I CAN READ YEARS WRITTEN IN ROMAN NUMERALS			



WE HAVE LIFT OFF!

YOU TRAVELLED THROUGH:



MERCU**R****Y**

NAME: _____

DAY / MONTH / YEAR _____

TEACHER _____

MATHS PASSPORT
memorable mathematics for children

OFFICIAL CERTIFICATE

MATHS PASSPORT
memorable mathematics for children

DID YOU KNOW ?



BECAUSE MERCURY GOES ROUND THE SUN SO QUICKLY, THE PLANET WAS NAMED AFTER THE MESSENGER OF THE ROMAN GODS!

IT TAKES MERCURY 88 EARTH DAYS TO GO AROUND THE SUN AND MOVES AT A SPEED OF 107,372 MILES AN HOUR!



MERCURY IS THE PLANET CLOSEST TO THE SUN. IT IS ABOUT 36 MILLION MILES AWAY!

A DAY ON MERCURY LASTS FOR 59 EARTH DAYS AS THIS IS HOW LONG IT TAKES TO TURN FROM DAY INTO NIGHT!



MERCURY IS ONE OF FIVE PLANETS THAT CAN BE SEEN FROM EARTH WITHOUT USING A TELESCOPE!