



FOR FLYING

MATHS PASSPORT
memorable mathematics for children

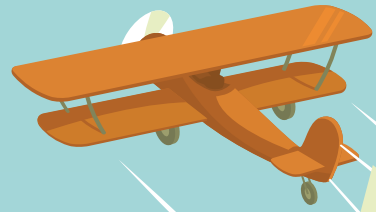
©2017 MATHS PASSPORT. ALL RIGHTS RESERVED.



MATHS PASSPORT

memorable mathematics for children





WELCOME TO

ANTARCTICA!



WHERE NEXT?

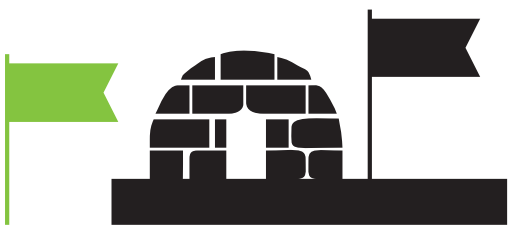


AUSTRALASIA!

WHAT I NEED TO DO!

THESE ARE THE TARGETS I NEED TO ACHIEVE TO COMPLETE ANTARCTICA	DATE I FIRST MET THE TARGET	DATE I MET THE TARGET FOR A SECOND TIME	DATE I COMPLETED THE TARGET
I KNOW BY HEART ALL MULTIPLICATION FACTS FOR 10 UP TO 10×12			
I KNOW BY HEART ALL DIVISION FACTS FOR 10 UP TO 120			
I KNOW BY HEART ALL BONDS OF MULTIPLES OF 10 UP TO 100			
I CAN COUNT FORWARDS AND BACKWARDS IN MULTIPLES OF 5			
I KNOW BY HEART ALL MULTIPLICATION FACTS FOR 5 UP TO 5×12			
I KNOW BY HEART ALL DIVISION FACTS FOR 5 UP TO 60			

©2017 MATHS PASSPORT. ALL RIGHTS RESERVED.



SPECTACULAR!

YOU TRAVELLED THROUGH:

ANTARCTICA

NAME: _____

DAY / MONTH / YEAR _____

TEACHER _____

MATHS PASSPORT
memorable mathematics for children

OFFICIAL CERTIFICATE
★★★★★

Icons include: a smiling Earth, a rocket, a sun, a moon, a purple alien, an astronaut holding a flag that says 'MATHS PASSPORT', and a star.

DID YOU KNOW?



BECAUSE IT EXPERIENCES SUCH LITTLE RAIN, ANTARCTICA IS CONSIDERED A DESERT!



THE COLDEST RECORDED TEMPERATURE EVER WAS IN ANTARCTICA: -89°C !

DURING WINTER, ANTARCTICA ALMOST DOUBLES IN SIZE AS THE OCEAN FREEZES!



PENGUINS SWIM SO FAST TO ESCAPE THE JAWS OF A LEOPARD SEAL THAT THEY CAN SHOOT OUT OF THE WATER TWO METRES TO REACH SAFETY ON THE ICE!

THE SOUTH POLE WAS FIRST REACHED BY A NORWEGIAN NAMED ROALD AMUNDSEN IN 1911!



AT IT'S THICKEST POINT THE ANTARCTIC ICE SHEET IS 5KM DEEP! THIS IS 90 PERCENT OF ALL THE WORLD'S ICE AND 70 PERCENT OF ALL THE WORLD'S FRESH WATER!